

# ORIFLAME

— S W E D E N —

CATALOGUE 01 2026  
(JANUARY 01 - MARCH 31)



Cleanse,  
moisturise,  
protect.  
**That's it.**



## Colour that pops, lines that lasts

With The One High Impact Eyeliner that twists and glides smoothly, own the makeup game create playful looks.



## Vivacious sparkle of style

Created for the modern chic woman that exudes elegance, Eclat Femme Weekend is a perfect blend of class and modernity.



Page **79**

### **Love NatureUp-Loved Purifying Shampoo**

Helps to revitalize and purify scalp and hair

Page **80**

### **Milk & Honey Gold Nourishing Hand & Body Cream**

Luxurious, intensively nourishing hand and body care infused with organically sourced extracts of milk and honey, which moisturise and condition for wonderfully soft, supple skin.



## THE ORIFLAME **MUST HAVES**

Shop these selected beauty buys and check out our top recommendations.

Page **17**

### **Feminelle Soothing Intimate Wash with Aloe Vera**

Mild, pH-balanced formulation to help maintain balance of the intimate area



Page **32**

### **Giordani Gold Essenza Parfum**

A velvety floral Orange Blossom Luxury Essenza® Parfum



## INSIDE THE ISSUE **CATALOGUE 01 2024**

Now that you're here, take a look around

**The glow-up academy** 10

**Fragrances** 29

**Personal care** 67

**Nutrition** 21

**Skincare** 53

**Makeup** 61

# *The glow-up* academy

In 2008, I had my first child and went from a UK Size 12 to a Size 18. Two years later I had my twin boys and found myself at a Size 22. And then began 15 years of battling to lose and control my weight. I tried every diet plan but nothing was working in the long run. In 2021, I was officially diagnosed as Obese Spectrum 1. Then, Oriflame launched Wellosophy Meal Replacements in Nigeria.

In January 2024, I applied to join the Wellosophy Bootcamp and try one more time to lose some weight and begin to get my health back. The day I received my approval was one of the happiest days of my life. So the journey began – it was a 90-day intensive weight loss bootcamp that changed my life for the best.

After three months of using Wellosophy Meal Replacements, I lost 10kg, and after five months I lost 28kg, which was simply mind-blowing as my health improved greatly. One year and seven months in, I have officially lost 30kg and now am at the weight of 68kg. I am now maintaining this weight by replacing at least one meal daily with Wellosophy Meal Replacements and continued physical activity, which is supported with Wellosophy Wellness Woman Daily.

All ailments I was struggling with when I was obese have reduced to none, as my immunity is strong and energy levels are great. I made it with Wellosophy and you can also fight obesity to get healthy again with this amazing range of products. My family and I will forever be grateful for these products that restored my health and wellbeing.

**Iniye Emelife**  
Brand Partner  
Oriflame Nigeria



Starting the year with  
**healthy routines**



**Working out is my**  
happy place



NEW!

# Optimals

## It's as easy as...

**A time-efficient 3-step routine for the ultimate skinalist!** Packed with innovative ingredients, new Optimals delivers increased long-term hydration, helps **preserve the balance of the skin microbiome**, and **strengthens the skin barrier**. It's maximum results with minimum fuss, for your most amazing skin yet.

1

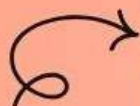


2



3





This hybrid cream delivers instant 48h hydration for the eye and lip contours and reduces the appearance of puffiness and dark circles, making skin around eyes look fresh and rejuvenated.



**NEW!**

**Opt Optimals Eye & Lip Contour Cream**

15 ml

**45291**

**GHC 315**



IF YOU WANT TO SWITCH THINGS UP,  
ADD IT WITH EASE TO THE ROUTINE.

**NEW!**

Optimals

Step

# cleanse

Perfect for dry skin<sup>1</sup>

Effectively cleanses  
without stripping skin  
of moisture\*

\*Consumer tested



Step

# protect

This lightweight, **oil-free protector** shields skin against UVA, UVB and pollution, and helps reduce dullness for a **glowing complexion**. Apply in the morning over your moisturiser and reapply throughout the day for maximum protection.



**a Opt Optimals Soft Creamy Cleanser**

150 ml

**46900 GHC 245**

**Opt Optimals Daily Glow Multi i-Protector SPF50**

30 ml

**45292 GHC 406**

**OPT Optimals Even Out Light Cream**

50 ml

**45243 GHC 367**

2Step

# moisturise

Ideal for oily skin

Helps prevent  
hyperpigmentation

**NEW!**

Helps **boost**  
surface cell  
turnover

With  
**O-Brightening  
Complex and  
Glycolic Acid.**



## FADE OUT DARK SPOTS, TURN UP GLOW

Say goodbye to uneven skin tone and hello to brightness and glow! Optimals Even Out helps to reduce excess melanin and boost skin barrier strength and hydration, for a bright, even, healthy-looking complexion.

**OptOptimals  
EvenOutSerum**

30 ml

**45248**

**GHC 446**



**1 - 2 - 3**

**DAY ROUTINE**

Cleanse,  
moisturise, protect



**1 - 2 - 3**

**NIGHT ROUTINE**

Cleanse,  
boost, moisturise.

A young man and woman are embracing on a boat deck. The man is in the foreground, smiling, wearing a white shirt and dark trousers. The woman is behind him, also smiling, wearing a blue and white striped sweater. Both are holding clear glass bottles of ECEAY fragrance. The background shows a blue sky with clouds and a body of water.

NEW!

Take me  
there...

Escape the everyday and revel in heightened elegance with weekend destination scents – and join the jet-set crowd on the Riviera! A refined blend of sun-kissed Mediterranean notes, the South of France transport you to vivifying escapades, as Eau de Toilettes for him and her take you there.

**NEW!**

**Fresh & energetic**  
**WOODY AROMATIC**



Pink Peppercorn, Côte d'Azur  
Accord, Mineral Leather Accord

**a Eclat Homme Weekend**  
**Azur Eau de Toilette**  
75 ml

**46795 GHC 770**

**Peaceful & refreshing**  
**FLORAL WOODY**



Grapefruit, White Gardenia,  
Ambery Woods

**b Eclat Femme Weekend**  
**Riviera Eau de Toilette**  
50 ml

**46792 GHC 770**





1st mascara with  
natural origin  
fibres in  
Oriflame!

95%

saw  
PLUMPING  
VOLUME\*

24hr

longwear  
volume\*

92%

saw  
thicker-looking  
lashes in just  
1 stroke\*

\*Consumer tested on  
multiple lash types (short,  
long, curved, straight)

THE ONE Pump  
& Plump  
Mascara

8 ml


GHC 252



NEW!

"The brush is perfect for  
building-up product on  
the lashes – and reaching  
harder to reach lashes!"

46896 Black



47704 Black

- **Waterproof** formula
- **Smudge-proof** performance
- **Long-lasting** wear

**NEW!**

#### WHAT GIVES THE

Flexible yet resistant  
**2-in-1 Flexible Fill**  
locks colour in for  
smudge-proof long  
wear that doesn't crease,  
Vitamin E helps care  
the delicate skin in  
the eye area.



**THE ONE High  
Impact  
Eyeliner**  
0.3 g  
**GHC 186**



## THE GLOW-UP ROUTINE: **nourish from within**

"3 months of using Wellosophy Meal Replacement, I lost 10kg, and after 5 months of using Wellosophy Meal Replacement; I lost 28kg which was simply mind blowing"

**Iniye Emelife**  
**Brand Partner**  
**Oriflame Nigeria**

### **a Wellosophy Smartshake Bottle**

Size: 22x9.5cm. Liquid compartment: 600ml. Compartment with divider: 140ml. Base compartment: 200ml. Materials: PP, PE and stainless steel.

**46664 GHC 798**

### **b Wellosophy Scoop**

Size: 11.2x4.2cm Material: PP.

**46068 GHC 64**



**a Wellosophy Meal Replacement for Weight Control Vanilla Flavour**

25gperserving, 21 servings, 525g.

**45306 GHC 2,086**



**b Wellosophy Meal Replacement for Weight Control Chocolate Flavour**

25gperserving, 21 servings, 525g.

**45307 GHC 2,086**

Dieting and maintaining weight loss is never easy – it can be complicated, hard to stick to, demoralising. But research has shown that **people using meal replacements tend to be more successful!** (Astbury et al., 2018)

A close-up photograph of a woman with dark skin and braided hair, looking thoughtfully to the side while holding a clear glass perfume bottle to her nose. The bottle has a pink label with the text 'MISS GIORDANI FLORAL'. She is wearing a light-colored garment with a pink floral pattern. The background is a soft-focus field of white flowers.

THE GLOW-UP ROUTINE:

# scent your day

**Fragrance completes your glow up** – elevating mood and presence. Whether it's floral dreams or fresh woody notes, Miss & Mister Giordani are here to complement the elegant ones.



Dreamy & romantic

**WHITE FLORAL**



Neroli, Jasmine, Tuberose, Peony,  
Ylang Ylang

**Giordani Gold Miss  
Giordani Floral Eau de  
Parf m**

50 ml

**47514 GHC 770**

Elegant & sophisticated

**WOODY – WATERY**



Artemisia, Floated Wood Accord,  
Vetiver

**Giordani Gold Mister  
Giordani Aqua Eau de  
Parf um**

75 ml

**47502 GHC 770**

# THE GLOW-UP ROUTINE: get comfortable



**pH-Balanced Formulation** This product's pH level of 4.0–5.0 matches the vagina's natural pH, maintaining health and protecting against imbalances.

**Feminelle Smoothing Shaving Gel with Aloe Vera**

150 ml

**46367 GHC 235**

Feel fresh and comfortable with our intimate wash specially designed to cleanse and care for the intimate area during puberty.



**a Feminelle Gentle Intimate Wash with Cotton Extract**  
300 ml  
**46964**  
**GHC 210**

**b Feminelle Soothing Intimate Wash with Aloe Vera**  
300 ml

**46965 GHC 210**

**c Feminelle Moisturising Intimate Cleansing Cream with Hyaluronic Acid and Peach Extract**  
300 ml

**46966 GHC 210**

The oil of this famous exotic treat has been part of people's diet and skin care routine for centuries. High in fatty acids, **it helps nourish the skin when cleansing and moisturising.**

THE GLOW-UP ROUTINE:

# energise yourself

Indulge in a daily ritual of care to create a new you. **Softening, smoothing, and nourishing your skin with every touch**, Love Nature is here to reveal your glow. More than hydration; this is self-care in its most comforting form.



200 ml

a Love Nature Nourishing Body Cream with Organic Cacao Butter & Coconut Oil

200 ml

42991 GHC 277



**b Love Nature Nourishing  
Body Lotion with Organic  
Cacao Butter & Coconut  
Oil**

750 ml

**41490 GHC 671**



**c Love Nature Energising  
Body Lotion with Organic  
Mint & Raspberry**

500 ml

**41505 GHC 487**

THE GLOW-UP ROUTINE:

# moisturise

"I really like this mask – my skin looks much smoother and plumped in the morning. Easy to apply and absorbs amazingly quickly!"

a **Novage+Intense Skin  
Recharge Overnight Mask**  
50 ml

**42255**

**GHC 643**

"Left my skin  
moisturised and  
radiant"

b **Novage+ Intense  
Nourishment Facial Oil  
Capsules**

30 pcs

**42256 GHC933**



a



b

ICON  
★★★★★

The ICON logo is used to show that the product(s) meet the criteria for our most popular and best-selling products.



Support your  
heart, brain and  
eye health



Antioxidant  
support from  
the inside out



nutrition

# GET HEALTHIER FEEL HAPPIER

## NATURAL POWER

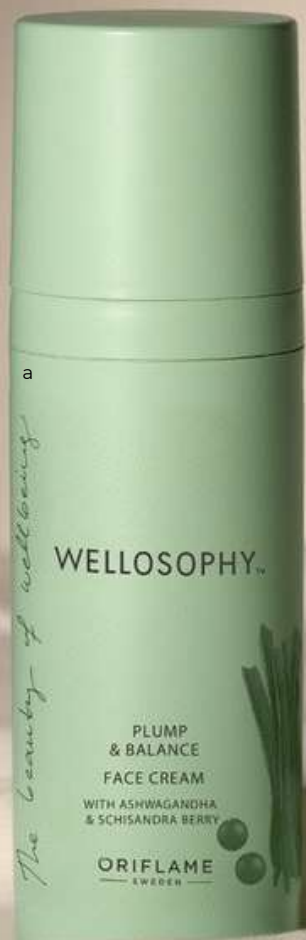
Support your immune system  
with natural astaxanthin

## MULTIVITAMIN & MINERAL

Make sure to have vitamins  
and minerals you need

## SUPPORT FOR KIDS

Makesureyourlovedones  
getthebeststartinlife



#### FACE CREAM

Say hello to **plump, glowing skin** and help prevent premature ageing, with this moisturiser for day and night.

**a Wellosophy Plump & Balance Face Cream**

50 ml

**45138 GHC 490**

#### CLEANSER

**DEEPLY CLEANSES THE SKIN**, gently dissolving dirt, impurities, pollutants & makeup\*



**b Wellosophy Calm & Balance Cleanser**

95 ml

**45149**

**GHC 329**

\*Consumer tested on 112 women of different ethnicities in the UK, aged 25-45

#### SERUM

Supercharge your daily skin ritual with this **anti-ageing serum**: the soothing essence for **a rejuvenated, balanced and luminous complexion**.



**c Wellosophy Smooth & Balance Gel-Serum**

50 ml

**45139**

**GHC 686**

# The CORE RITUAL: cleanser, serum, moisturiser

Life is complex, but your skincare needn't be. With three core products designed for 30 days of Wellosophy daily skincare ritual, healthy-looking skin that glows with natural radiance is within reach.

It's simplicity for your wellbeing.



Certified with  
The Vegan  
Society™



**Wellosophy Skin Core Ritual Kit**  
3 full-size products: cleanser, serum, face cream.

**47847 GHC 1,505**  
**GHC 1,204**

# ARE YOU CARING FOR THE **WHOLE** OF YOU?



The ICON logo is used to show that the product(s) meet the criteria for our most popular and best-selling products.





FORMULATED TO  
ADDRESS THE  
NUTRITIONAL NEEDS  
OF MEN & WOMEN

YOUR HEALTHY  
FOUNDATION IN  
A DAILY SACHET

### Wellosophy Wellness Pack Woman

21 sachets. 1 sachet daily. 66.3g.

**38838 GHC 1,260**

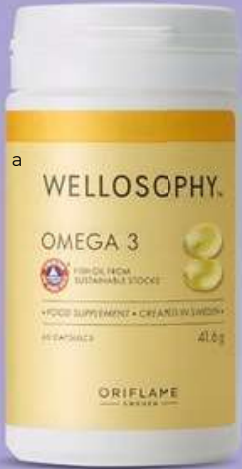
### Wellosophy Pack Man

21 sachets. 1 sachet daily. 66.3g.

**38836 GHC 1,260**

# Are you eating enough oily fish and seafood?

Food supplements should not be used to substitute for a balanced and varied diet.



**a WellosoPHY Omega 3**  
60capsules.2capsulesaday.  
41.6g.  
**38556 GHC644**

Take 2 capsules daily  
with water and a  
meal



Dietary support from 4-17 years  
Provides 13 vitamins and 9 minerals  
Yummy taste of raspberry



**b WellosoPHY Multivitamin & Mineral Kids**  
30t ablets.4-10y-1aday;11-17y-  
2 a day. 37.6 g  
**29699 GHC 490**



# Radiate From Within

Food supplements should not be used to substitute for a balanced and varied diet.



**c WellosoPHY Astaxanthin & Bilberry Extract**  
30capsules.1-2capsulesaday.  
21.3g.  
**38557 GHC840**

Take 1-2  
capsules daily  
with water and  
a meal



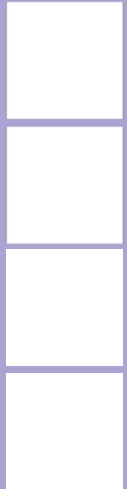
# Because I want to unlock my inner glow

Formulated to  
and nail health\*  
2 tablets provide  
100% of the NRV  
of biotin



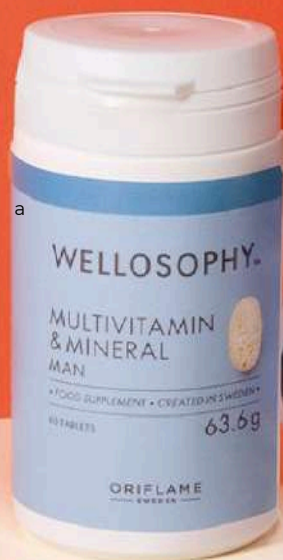
**d WellosoPHY Skin, Hair & Nail NutriComplex**  
60tablets.2aday.42.8g.  
**45273 GHC 770**

TOOTH



# READY FOR THE GOOD LIFE

Packed with antioxidants!  
High in vitamins C, E and riboflavin (B2).  
High in minerals copper (Cu), selenium (Se) and zinc (Zn).  
Source of manganese (Mn).



**Take 1 tablet  
daily with  
water and a meal**



**a Wellosophy Multivitamin & Mineral Man**

60 tablets. 1 tablet a day. 63.6g.

**38558 GHC616**

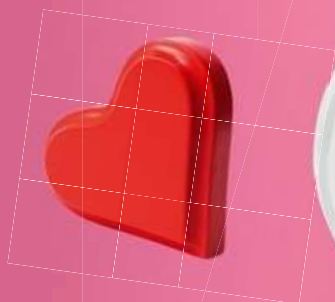
**b Wellosophy Multivitamin & Mineral Woman**

60 tablets. 1 tablet a day. 63.6g.

**38559 GHC 616**

Food supplements should not be used to substitute for a balanced and varied diet.

# Treat yourself to ourtoprecommendation



**Calcium** is needed for the maintenance of normal bones and teeth.

**Vitamin D** contributes to normal absorption of calcium and phosphorus.

**With Aquamin TG** – more easily absorbed than other calcium formats!

**WellosoPHY Marine Calcium & Vitamin D**

30tablets, 1-2aday, 45g

**45309**

**GHC 700**





# fragrances

## *ELEGANCE AWAITS YOU*

### **LONG-LASTING ALLURE**

Discover sophisticated world of GG Essenza Supreme

### **IRRESISTIBLE CHOICE**

increase your attraction power with Magnetista EDP

### **FEEL THE LOVE**

Rediscover romantic feelings with Volare EDP

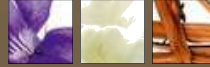
# Let your inner star shine!

Dial up the glam everyday with Divine Eau de Parfum: your daily dose of diva energy.

**a Divine Eau de Parfum**  
50 ml  
**38497**  
**GHC 770**  
**Divine Perfumed Body Cream**

25 0 m l  
**47016**  
**GHC 336**

**Elegant & sophisticated**  
**FLORAL FRUITY WOODY**



Violet, Lily and Freesia, Sandalwood



# Fuel *the romance*

There's no better elixir than Love Potion to help you discover the essence of romance on a warm summer night. Its spicy scent is irresistible, making it the perfect fragrance for an unforgettable evening out.

**a Love Potion Eau de Parfum**  
50 ml

**42751**  
**GHC 770**

**Love Potion Perfumed Body Cream**

25 0 m l  
**47013**  
**GHC 336**

**Sensual & mysterious**  
**AMBERY VANILLIC FRUITY**



Ginger, Cocoa Flower, Chocolate



JOY ADAKU CHUKWUKERE



## Luscious juicy Cherry meets decadent Chocolate Truffle

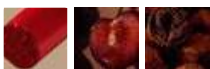
in an irresistibly profound addiction. A gourmand alchemy of insatiable sweetness, flirty tart facets and powdery creaminess – evoking a delectable treat for date night.

**NEW!**

Play the  
effervescent  
*cherry flirt*

**Sensual & mysterious**

**AMBERY FRUITY**

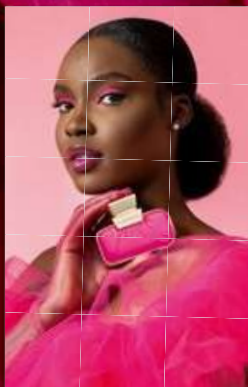


Lipstick Accord, Black Cherry, Chocolate Truffle Accord  
**LovePotion Cherry on Top Eau de Parfum**

50 ml

**46047 GHC 770**





# ALL OR NOTHING

## *Your scent, your way*

Experience the luxe of ALL or NOTHING scents, designed to merge with your skin and express your unique individuality. Whether it's the exquisite Vanilla Surabsolute or Precious Amber Accord, All or Nothing Perfumes have the best note selection. Having the highest fragrance concentration in Oriflame for an addictive and supremely long-lasting trail.

### **Bold & confident**

#### **AMBER FLORAL**



Scentaurus Juicy, Tuberose Absolute  
India Orpur™, Red Ginger Oil Laos  
Orpur™, Precious Amber Accord

#### **a All or Nothing Amplified Parfum**

50 ml

**46060**

**GHC 1,400**

#### **b All Or Nothing Amplified Perfumed Body Cream**

250 ml

**47020**

**GHC 336**

### **ORIENTAL VANILLIC FRUITY**



Magnolia, Raspberry, Vanilla  
Surabsolute

#### **c All or Nothing Parf um**

50 ml

**35679**

**GHC 1,400**





ICON  
★★★★★

The ICON logo is used to show that the product(s) meet the criteria for our most popular and best-selling products.

## The essence of sophistication

Elegant & sophisticated

FLORAL WOODY



Calabrian Bergamot, Orange Blossom Luxury Essenza®, Tuscan Wood

a Giordani Gold Essenza Perfumed Body Cream

250 ml

47011 GHC 336

Giordani Gold Essenza Parfum

50 ml

47511 GHC 1,300

Giordani Gold Essenza Perfumed Body Spray

75 ml

42806 GHC 203



## Glow with golden beauty

Orange Blossom meets "Red Gold" Saffron in an exclusive Glow Accord. Like molten gold, the world's most valuable spice, Saffron, elevates the GG fragrance to new heights.

Elegant & sophisticated

ORIENTAL FLORAL



Raspberry, Glow Accord (crafted with Orange Blossom and Saffron extract), Ambrox®

d Giordani Gold Good as Gold Woman Eau de Parfum

50 ml

38533 GHC 1,159





8hr long-lasting  
fragrance



## The essence of refinement

A deeply fragrant tribute to refined style, experience superlative perfumery as Giordani Gold Essenza Man Elixir Parfum unveils a new era of masculine fragrance. It's the essence of refinement.



Elegant & sophisticated  
**WOODY VETIVER**



Black Pepper, Olibanum, Ambery Woods

**a Giordani Gold  
Essenza Man  
Elixir Parfum**

50 ml

**45967**

**GHC 1,300**



12h long-lasting  
fragrance



*The*  
**essence of**  
**opulence**

Asupremely long-lasting  
Parfum that lingers for 12  
hours: a first in Oriflame  
fragrances for a new level  
of luxe sophistication.

Elegant & sophisticated  
**AMBERY FLORAL**



Pineapple, White Floral Infusion,  
Olibanum

**b Giordani Gold  
Essenza  
Supreme  
Parfum**

50 ml

**40683**

**GHC 1,300**

## A new definition of craft

Arefinedand elegant

scent crafted for a sophisticated man.



Elegant & sophisticated

WOODY VETIVER



Bergamot, Black Pepper, Vetiver

**a Giordani Gold Man Eau de Parfum**

75 ml

**38538**

**GHC 770**

**b Giordani Gold Man Anti-Perspirant Roll-On Deodorant**

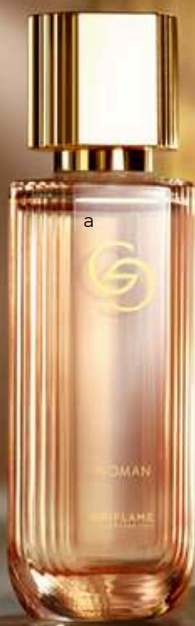
50 ml

**42204**

**GHC 129**

## CRAFTED of the FINEST INGREDIENTS

With its most exquisite design, this timeless fragrance unveils a symbol of glamorous femininity that represents Giordani Gold women's radiant life of beauty and passion.



Elegant & sophisticated

FLORAL WHITE FLOWERS WOODY



Mandarin, Orange Blossom, Patchouli

**a Giordani Gold Woman Eau de Parfum**

50 ml

**38531**

**GHC 770**

**b Giordani Gold Woman Perfumed Roll-On Deodorant**

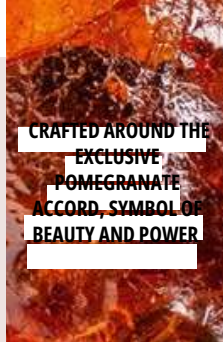
50 ml

**43665**

**GHC 129**



CRAFTED AROUND THE  
EXCLUSIVE  
POMEGRANATE  
ACCORD, SYMBOL OF  
BEAUTY AND POWER



## Empowering your goddess within

Let Venus, the goddess of Love and Beauty, hypnotise you with a lush blend of pomegranate sweetness, tempting apples and an intensely woody depth.

**Bold & confident**

**WOODY FRUITY**



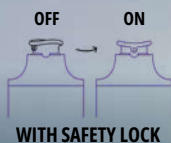
Pomegranate Accord, Osmanthus Absolute, Amber Woods Accord

**a Possess  
Absolute Eau de  
Parf um**

50 ml

**42968**

**GHC 1,008**



WOODY, SPICY EAU DE  
PARFUM TO REVEAL  
YOUR ABSOLUTE POWER



## Awaken the hero within you

An epic aura surrounds you, as aromatic facets of Lavender, Geranium and warm Cinnamon fuel your innate power

**Strong & confident**

**WOODY VETIVER**



Black Pepper, Olibanum, Ambery Woods

**b Possess  
Absolute Man Eau  
de Parfum**

75 ml

**45357**

**1,008**

**GHC**



**JAMES GYANG DUNGIET  
AND BELOVED OMOLADE  
JAMES-DUNGIET**

**Happy & energising**

**FLORAL FRUITY**



Mandarin, Tuberose, White  
Amber

**a Greater Eau de  
Toilette for her**

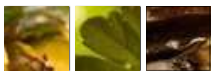
50 ml

**43118**

**GHC 686**

**Clean & Refreshing**

**WOODY FRUITY**



Pineapple, Geranium, Guaiac

**b Greater Eau de  
Toilette for him**

75 ml

**38552**

**GHC 686**



***There's no stopping you***



Feel the momentum as you step into each new day with fresh enthusiasm, believing anything is possible with every spray of Greater Eau de Toilettes. The uplifting scents for him and her to empower your vibrant journey with a greater feeling – an inspiring aura surrounding you, as you aim for greatness.



**Dreamy & romantic**  
**FLORAL FRUITY WOODY**



White Violet, White Orris, Cedarwood

**a Eclat Amour**  
**Eau de Toilette**

50 ml

**35649**

**GHC 588**

**AROMATIC TONIC**



Mint, Orris, Cuir Corroyé

**b Eclat**  
**Toujours Eau**  
**de Toilette**

75 ml

**35651**

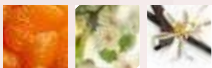
**GHC 588**

*Make your*  
**true love promise**

The ultimate love story ... sharing the  
ultimate romance of your dreams with your  
perfect love...Amour Toujours!



**Dreamy & romantic**  
**AMBERY FLORAL**



Mandarin, Linden Flower, Vanilla

**a ECLAT Amour**  
**Intensité Eau de**  
**Toilette**

50 ml

**46062**

**GHC 588**

**EXOTIC & sophisticated**  
**CHYPRE FLORAL**



Blueberry, Jasmine, Patchouli

**b Eclat Nuit**  
**Eau de Parfum for**  
**her**

50ml.

**40788**

**GHC 770**

*Lose yourself*  
**in love**

Feel the essence of Parisian  
love at first spray




**SABDAT MUSA ATABO**

*A happy tribute to timeless grace and inner strength.*

Happy & energising

**FLORAL - FRUITY - WOODY**



Mandarin, Jasmine  
Grandiflorum, Cashmere Wood

**a Infinita Eau  
de Parfum**

50 ml

**35653**

**GHC 770**

Happy & energising

**SOLAR FLORAL AMBERY**



Mandarin, Jasmine Absolute,  
Sunlit Accord

**b Infinita My  
Sunshine Eau de  
Parf um**

50 ml

**44315**

**GHC 770**



## ***A Dance of Joy***

Explore two expressions of feminine power: Infinita speaks to your inner strength and Infinita Sunshine kisses your carefree spirit.

Together, they celebrate the balance within every woman:

grounded yet glowing, strong yet soft.



## Unveil your sensuality

This selection is here to unveil the different facets of your persona. Show your elegant, mysterious or sweet side as you feel like it. Your rich inner world is waiting to be reflected with these mesmerising fragrance notes. Now is the time to express your unique self.



### Sensual & mysterious FLORAL WOODY MUSK



Pear, Bright Petals Bloom Accord, Musk

### a Whispers Of Me Eau de Parfum 50 ml

40809 GHC 770

### Happy & energising ORIENTAL VANILLIC FRUITY



Peach Candy, Rose Jelly, Dulce de Leche

### b OH! SWEET DULCE DE LECHE Eau de Toilette 50 ml

44288 GHC 515

### Dreamy & romantic FLORAL ROSE VIOLET



Violet Leaves, Rose Damascena, Leather Accord

### c Volare Eau de Parfum 50 ml

42514  
GHC 616



PROVEN  
TO  
ATTRACT

AN OPULENT JEWEL  
THAT IS ALLURING,  
MYSTERIOUS  
AND SEDUCTIVE



**a**

**The key to unstoppable attraction**

Famous for its striking appearance and bewitching colours, the Passion Flower Accord symbolizes the magnetic power of attraction. It's all thanks to Chrysin, a testosterone-boosting plant compound, known to stimulate the senses.



**b**

**The warm beauty of amber unleashed**

Enchanting, sensual eau de parfum, blended with the rare Red Lily flower for a sophisticated fragrance that promises mystery and excitement.

**Sensual & mysterious**

**ORIENTAL FLORAL**



Blackcurrant, Passion Flower Accord, Sandalwood

**a Magnetista  
Eau de Parfum**

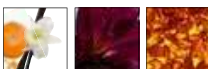
50 ml

**42741**

**GHC 1,159**

**Sensual & mysterious**

**ORIENTAL CITRUS FLORAL**



Orange Vanilla, Red Lily, Amber

**b Amber Elixir  
Mystery Eau de  
Parfum**

50 ml

**35681**

**GHC 770**

# For all perfume lovers.

Scope transcends mere scent; it's a vibe, a style statement, and a journey unveiling every dimension of you. Each fragrance is a cosmic mirror reflecting your unique persona. Who are you today? Dive in and let your scent saga unfold!



**Peaceful & refreshing**

**AMBERY VANILLIC MUSKY**



Joyful Accord: a Blend of Smooth Vanilla and Sea Breeze, Jasmine, Musk

**a Scope Time Loop Eau de Toilette**

50 ml

**46056**

**GHC 686**

**Happy & energising**

**FRUITY – WOODY**



Pearadise®, Magnolia, Musk, Sandalwood

**b Scope Earth Wonder Eau de Toilette**

50 ml

**46057**

**GHC 686**

Signature  
Man

*Elegance is  
your  
signature*



**NEW!**

**Your favourite scent  
now with a new look**

A classic, masculine fragrance with a characteristic contemporary twist of crisp pear, warm vanilla and spicy nutmeg to mirror your suave style.

**Elegant & sophisticated**

**WOODY FRUITY**



Pear, Vanilla, Nutmeg

**Signature Man Eau de Toilette**

75 ml

**48671 GHC 770**



**Feel your strength intensify**

Rise up and take your strength and masculinity to an intense new level. Stimulate the forces within you, and thrive in a moment of enhanced and unbreakable power.

**a**

**Strong & confident**  
ORIENTAL - SPICY

Black Cardamom, Red Guarana, Amber

**a Ascendant Intense Eau de Parfum**  
75 ml

**38527**  
**GHC 770**



**Feel free. Go your way.**

Glacier Rock has been inspired by the feeling of excitement that fills you when you are facing a new challenge.

**b**

**Strong & confident**  
AROMATIC FOUGERE

Yellow Lemon, Cucumber, Mineral Amber

**b Glacier Rock Eau de Toilette**  
100 ml

**42816**  
**GHC 515**

## Stand out without even trying

Take the centre stage in every room without even trying... Be the Legend captures this magnetising aura of contrasts by pairing sensual leather with crisp, juicy apple and the intoxicating warmth of tonka bean.



**Strong & confident**

**ORIENTAL WOODY FRUITY**



Leather Accord, Apple, Tonka Bean

**a Be The Legend  
Anti-perspirant  
Roll-on Deodorant**

50 ml

**34076**

**GHC 129**

**b Be the Legend  
Eau de Toilette**  
75 ml

**30468**

**GHC 588**

# Treat yourself to our top recommendation



100 ml

Men's Collection  
Agave Power Eau  
De Toilette

100 ml

46044

GHC 616

Infused with the  
masculine Blue Agave  
Accord scent

**Strong & confident**

**FOUGÈRE AROMATIC**



Blue Agave Accord, Geranium Oil,  
Cashmeran



All day super  
tightweight  
lashes



makeup



Showstopping  
colour and moisture.

# GET ALL THE ATTENTION

## MAXIMISE EVERY LASH

Get extra Large Volume and Length with  
THE ONE 5-in-1 Mascara

## GREAT LOOKING LIPS

Try intense colour and matte finish with  
THE ONE lipsticks

**GET THAT  
STRESS-FREE  
LOOK**



**THE ONE**  
Everlasting Sync  
Stress-Free  
Foundation SPF 20  
+ UVA protection  
Natural  
30 ml  
**GHC 368**

46915 Sienna

46916 Toast

46917 Hazelnut

**Stress-Free Staying Power:**  
with Longwear Complex that locks-in makeup instantly, delivering long-lasting, transfer-proof all-day wear.

**Stress-Free Look:**  
fresh & natural finish with a colour-correcting effect that visibly blurs signs of stress.



**24-hour long wear. \***

**Get a salon-like lash look \***

\* Consumer test.

**a THE ONE False Lashes Salon Lift 360 Bendable Mascara - Black**

8 ml

**46549  
GHC 280**



43348 Dusty Champagne

b

**Eyeshadow:**  
apply directly to the eyelid.

**EAppeplilnye**

**dri:rectly**  
to the lash line, from inner to outer corner. If applying over eyeshadow, wait until fully dried.

**b THE ONE Colour Unlimited Eye Shadow & Eye Pencil Duo**

1.2 g

**GHC 385**

# SHOWSTOPPING COLOUR



**a** THE ONE  
Smart Sync  
Lips tick  
3.8 g  
GHC 277



The ICON logo is used to show that the product(s) meet the criteria for our most popular and best-selling products.

**b** THE ONE 5-  
in-1 Wonder  
Lash XXL  
Ma scara  
8 ml  
GHC 217  
50

• **VOLUMISES – UP TO  
19X TIMES MORE  
VOLUME<sup>Δ</sup>**

• **LENGTHENS - UP TO  
51% MORE LENGTH<sup>Δ</sup>**

<sup>Δ</sup> Clinically Tested

40672 Black



**46438**  
Baked Terracotta

**46443**  
Marvellous Mocha

**46446**  
Deep Berry

**46447**  
Smart Red

**46449**  
Cherry Plum



Up-to 8 hours long  
lasting wear\*  
\*Consumer Tested

# ALL THE DRAMA. ALL THE COMFORT.

**41804** Ultra Red



**41804** Ultra Red

**41796** Ultra Taupe

**41801** Ultra Pink

**41805** Ultra Bordeaux

**41806** Ultra Burgundy

**38863**  
Charming Rose

**38865**  
Captivating Nude

**38868**  
Pink Passion

**38869**  
Magnetic Red

## Highshinelipstick

Lightweight, ultra-comfortable texture with creamy, liquid feel.\*



**38865**  
Captivating  
Nude

**a THE ONE  
Colour Unlimited  
Ultra Fix Lipstick**  
3.5 g  
**GHC 319**

**b THE ONE  
Irresistible Touch  
High Shine  
Lipstick**  
4 ml  
**GHC 319**

Clinically proven 99% fixation on lips<sup>Δ</sup>

Extreme comfortable wear\*

Up-to 8 hours long lasting wear\*

\*ConsumerTested  
<sup>Δ</sup>ClinicallyTested

# Treat yourself to ourtoprecommendation

**99% staying power** – clinically proven for long-lasting wear

**Ultra-intense,**

high-impact coverage with weightless matte finish\*

**Built-in precision**

applicator for impeccable looking lips\*

**THE ONE Colour Unlimited Ultra Fix Liquid Lip stick**

5 ml

**GHC 319**

\* Clinically Tested  
\* Consumer Tested

44718 Toasted Pink



**44718**  
Toasted Pink

**44720**  
Taffy Rose

**44722**  
Supreme Red

**44723**  
Fire Crimson



Renew skin  
with vitality



Deeply  
cleanses  
and purifies  
the skin

# skincare

## BE CONFIDENT IN YOUR SKIN

### NATURAL BEAUTY

Explore Love Nature  
for a beautiful skin

### DEFY YEARS

Look younger, feel  
younger with Novage+

### PAMPER YOURSELF

Indulge your skin with  
Milk & Honey Gold

# DAILY ROUTINE

Using a daily routine is the best way to keep blemishes at bay. Prevention is key to getting clear skin. This routine has three steps, and is designed to fight blemishes, blackheads and oily skin, but also to prevent them from developing in the first place. So, if you have blemish-prone skin, here's a good place to start.



## a Pure Skin Clarifying Toning Solution

150 ml

41672

GHC 214

## Pure Skin Mattifying & Cooling Face Lotion

50 ml

41673

GHC 214

Face Lotion reduces shine, mattifies and moisturises skin.

Apply toner to a cotton pad and sweep over face, avoiding the eye area.

## AS NEEDED

Clear your skin of blemishes with effective acids and soothing ingredients

### Why do we get blemishes?

Blemishes are caused by our genes or hormones, lifestyle factors such as a bad diet or stress, or environmental factors such as pollution. These factors cause your skin to become oilier, and create a whitehead or blackhead.



Use 1-2 times a week. Wet face with water, then apply a small amount of face scrub. Massage face gently, then wash off. Avoid the eye area.

Use 1-3 times a week. Apply to clean and dry skin, avoiding the lips and eye area. Leave for 20-30 minutes until dry. Peel off gently. Wipe off any excess product.

Use 1-2 times per week. Apply a thin layer of the mask to your skin, avoiding the eye area. Leave on for 5 minutes, then rinse with warm water.

Apply directly to the blemish or blemish prone area as soon as you feel a spot coming on.

#### a Pure Skin Smoothing Face Scrub

75 ml

**41675**  
**GHC 210**

#### b Pure Skin Pore Clearing Peel-off Mask

50 ml

**42881**  
**GHC 210**

#### c Pure Skin 5 Minute Oil-control Clay Mask

50 ml

**41674**  
**GHC 210**

#### d Pure Skin SOS Blemish Gel

6 ml

**41676**  
**GHC 210**



## SKIN SO HYDRATED IT GLOWS!

Experience the ultimate healthy-looking glow! Infused with luscious Pineapple and moisturising Aloe Vera, Love Nature Hydrating collection is a refreshing drink for your skin.

**JOY ADAKU  
CHUKWUKERE  
WINNER**



**a Love Nature  
Hydrating Face  
Mask with Organic  
Aloe Vera &  
Pineapple**

75 ml

**46072**

**GHC 206**

**b Love Nature  
Hydrating Toner with  
Organic Aloe Vera &  
Pineapple**

150 ml

**47003**

**GHC 206**

**c Love Nature  
Hydrating Face  
Cream with  
Organic Aloe Vera  
& Pineapple**

50 ml

**46071**

**GHC 206**

**d Love Nature  
Hydrating Gel  
Cleanser with  
Organic Aloe Vera &  
Pineapple**

125 ml

**46070 GHC 206**

# DESIGNED TO MATTIFY THE SKIN

Using fingertips, massage gently into face and neck morning and evening after cleansing and toning. Avoid the eye area.

**a Love Nature**  
**Mattifying Face Lotion with**

**Organic**  
**Tea Tree & Lime**  
50 ml

**34845**

**GHC 206**



b



c



a

Tea Tree organic essential oil is a godsend for oily skin due to its antimicrobial properties that help combat blemishes and purify your skin.

**b Love Nature**  
**Purifying Face Oil with**  
**Organic Tea Tree & Lime**

10 ml

**34849**

**GHC 159**

Apply to a cotton pad morning and evening cleansing sweep over the face and neck. Avoid the eye area.

**c Love Nature**  
**Purifying Toner**  
**after with Organic Tea**  
**Tree & Lime**

150 ml

**34843**

**GHC 206**



# SUN PROTECTION & POWERFUL ANTI-AGEING ALL YEAR ROUND



**Instant Skin Priming** – skin feels soft, moisturised, and smoother



**Invisible formula** with no white cast



**Advanced Skin Protect Technology** designed to protect the skin's collagen for anti-ageing benefits\*

\*Consumer Tested



+ Formulated to **effectively combat photo-ageing** and signs of premature ageing

+ With longer-

term use **skin feels firmer** and wrinkles appear reduced\*

\*Consumer Tested

+ Comfortable protection **for all skin types**, including sensitive

**Novage+ Proceuticals Ultra Light UV-Age Day Shield + SPF 50**

30 ml

**41059**

**GHC 607**

## REACTIVATE MENOPAUSAL SKIN

- + **Patented Bio-Boost** supports thicker, more resilient skin + helps stimulate collagen production
- + **Bio-Regen** has a powerful regenerative effect on the skin, scientifically proven to improve the quality of mature skin



Bio-Boost Patent no. SE542639



**a Novage+ Refresh Gel Cleanser**

150 ml

**41029**

**GHC 614**

**e Novage+ Restore Multi-Recover Night Cream**

50 ml

**44285**

**GHC 851**

**b Novage+ Restore Renewing Eye & Lip Contour Cream**

15 ml

**41070**

**GHC 770**

**f Novage+ Restore Renewing Routine**

5 full size products—cleanser, eye+lip cream, serum, day and night creams.

**45923**

**GHC 4,190**

**GHC 3,040**

**c Novage+ Restore Renewing Face Serum**

30 ml

**41075**

**GHC 1,113**

**d Novage+ Restore Multi-Correcting Day Cream SPF 30**

50 ml

**44098**

**GHC 851**



SET COMES WITH A BOX

BRIGHT INTENSE ROUTINE

# REDUCES HYPERPIGMENTATION VISIBILITY – IN JUST 2 WEEKS<sup>Δ1</sup>



+ Targets and  
**brightens dark  
spots**

+ Reduces the  
appearance of  
**fine lines and  
wrinkles**

<sup>Δ1</sup>Clinically tested result for the  
Novage+ Bright Intense Routine using  
cleanser, eye cream, serum, day and  
night creams.

a **Novage+  
Refresh Gel  
Clean ser**  
150 ml

**41029 GHC 614**

e **Novage+ Multi-  
Active Anti-Ageing  
Night Cream Light**  
50 ml

**41057  
GHC 770**

60

b **Novage+ Bright Intense  
Eye Cream**  
15 ml

**41033 GHC 687**

f **Novage+ Bright Intense  
Serum**  
30 ml

**41040  
GHC 955**

5 full size products – cleanser, eye cream, serum, day  
and night creams.

~~**45598 GHC 3,796**~~  
**GHC 3,036**

d **Novage+ Multi-  
Active Anti-Ageing  
Day Cream Light  
SPF 30**  
50 ml

**41044  
GHC 770**



SET COMES WITH A BOX

# SIGNIFICANTLY REDUCES THE APPEARANCE OF WRINKLES – IN JUST 2 WEEKS<sup>a</sup>



+ Targets **4 major types of wrinkle**

+ Formulated to **improve skin firmness and elasticity**

<sup>a</sup> Clinically tested result for the Novage+ Wrinkle Smooth Routine using cleanser, eye, serum, day cream, and night cream.

**a Novage+ Refresh Gel Clean ser**

150 ml

**41029**

**GHC 614**

**e Novage+ Multi-Active Anti-Ageing Night Cream Light**

50 ml

**41057**

**GHC 770**

**b Novage+ Wrinkle Smooth Eye Cream**

15 ml

**41034**

**GHC 687**

**c Novage+ Wrinkle Smooth Serum**

30 ml

**41035**

**GHC 955**

**d Novage+ Multi-Active Anti-Ageing Day Cream Light SPF 30**

50 ml

**41044**

**GHC 770**

**f Novage+ Wrinkle Smooth Routine Mixed**

5 full size products – cleanser, eye cream, serum, day and night creams.

**45590 GHC 3,769**

**GHC 3,036**



SET COMES WITH A BOX

BLEMISH + AGE DEFY ROUTINE

CLEARER SKIN, CLINICALLY  
PROVEN – IN JUST 2 WEEKS<sup>Δ</sup>



+ Helps **prevent**  
**future breakouts**

+ Reduces visible  
ageing signs,  
**including fine  
lines and wrinkles**

<sup>Δ</sup> Clinically tested result for the  
Novage+ Blemish + Age Defy Routine  
using cleanser, eye, serum, day and  
night creams.

**a Novage+  
Refresh Gel  
Cleanser**  
150 ml  
**41029**  
**GHC 614**

**b Novage+ Wrinkle  
Smooth Eye Cream**  
15 ml  
**41034**  
**GHC 687**

**c Novage+ Blemish  
+ Age Defy Serum**  
30 ml  
**41039**  
**GHC 955**

**d Novage+ Multi-  
Active Anti-Ageing  
Day Cream Light  
SPF 30**  
50 ml  
**41044**  
**GHC 770**

**e Novage+ Multi-  
Active Anti-Ageing  
Night Cream Light**  
50 ml  
**41057**  
**GHC 770**

**f Novage+ Blemish + Age Defy Routine Light**  
5 full size products –cleanser, eyecream, serum, day  
and night creams.  
**45608** ~~**GHC 3,796**~~  
**GHC 3,036**



SET COMES WITH A BOX

LIFT+FIRM ROUTINE

**MORE LIFT IN 2 WEEKS, WITH  
RESHAPING RESULTS THAT LAST!<sup>a1</sup>**



+ Improves elasticity, reduces sagging skin

+ Lifts, smooths and tightens skin

<sup>a1</sup>Clinically tested result for the Novage+ Lift + Firm Routine using cleanser, eye, serum, day cream, and night cream.

**a Novage+ Refresh Gel Cleanser**

150 ml  
**41029**  
**GHC 614**

**b Novage+ Lift + Firm Eye Cream**

15 ml  
**42425**  
**GHC 687**

**c Novage+ Lift + Firm Serum**

30 ml  
**41037**  
**GHC 955**

**d Novage+ Multi-Active Anti-Ageing Day Cream Rich SPF 30**

50 ml  
**41048**  
**GHC 770**

**e Novage+ Multi-Active Anti-Ageing Night Cream Rich**

50 ml  
**41058**  
**GHC 770**

**f Novage+ Lift + Firm Routine Rich**

5 full size products—cleanser, eye cream, serum, day and night creams.

**43691** ~~**GHC 3,796**~~  
**GHC 3,036**



SET COMES WITH A BOX

## CLEANSE AND HYDRATE EASILY

### **MICELLAR CLEANSING WATER**

cleanses, removes makeup,  
hydrates and soothes skin.

#### **a Optimals Soothing Micellar Cleansing Water**

150 ml

**42610**

**GHC 245**

**FACE SCRUB** helps  
stimulate skin  
renewal by  
clearing away  
dead skin cells.

#### **b Optimals Exfoliating Face Scrub**

75 ml

**42614**

**GHC 245**



## PURIFYING CLAY MASK

Deep-cleansing charcoal formula  
captures impurities, to visibly  
minimise pores and refresh skin.  
Easily spreadable clay texture.  
Dermatologically tested.

#### **c Optimals Purifying Clay Face Mask**

50 ml

**42615**

**GHC288**



## SILKY-LIGHT FORMULA



**ORGANIC AVOCADO OIL** – softening and smoothing for a nourished and supple texture.

Massage onto your **face and body**.  
Rub between the palm of your hands  
and apply to wet or dry hair, do not rinse.  
Avoid eye area.

**Love Nature Nourishing  
Body,  
Face & Hair Oil with organic  
Avocado oil**

100 ml

**41283  
GHC242**

## LIGHT TEXTURE WITH A DELICATE FLORAL SCENT



**BODY LOTION  
HYDRATES SKIN FOR UP TO 24 HOURS! <sup>A1</sup>**

\*Clinically tested. Glow Essentials Body Lotion with Vitamins E & B3 alone, after first use. Stratum corneum.

**b Glow Essentials Body Lotion  
with Vitamins E & B3**

250 ml

**43907 GHC232**

# Treat yourself to our top recommendation



Clinically proven to  
improve the overall  
appearance of stretch  
marks<sup>Δ</sup>

a The body edition Anti-  
Stretch mark Body  
Concentrate

125 ml

41827

GHC 466

Clinically proven to  
reduce the appearance  
of cellulite in 28 days<sup>Δ</sup>

Reduces orange peel  
appearance\*

For firmer, more toned skin\*

b The body edition  
Anti-Cellulite Body Gel

150 ml

41817

GHC 466

<sup>Δ</sup>Clinically tested    \*Consumer testing



Featuring Protect  
Shield Technology

Best daily ora  
care for sensitiv  
teeth



personal care

# FEEL HAPPY FROM HEAD TO TOE

## NURTURING NATURE

Treat your hair with  
Love Nature

## STRONG HAIR

Get great hair with  
DUOLOGI

## INTIMATE CARE

Feel confident  
with Feminelle

# MINI EFFORT, MAXI NOURISHMENT



**NEW!**

**a Love Nature Protecting Hand & Nail Cream with Organic Passion Fruit**

75 ml

**47202 GHC 119**

**b Love Nature Caring Hand Cream with Organic Avocado Oil**

75 ml

**44280 GHC 119**

**c Love Nature Nourishing Hand Cream with Organic Coconut Oil**

75 ml

**41338 GHC 119**

**97%**

**NATURAL ORIGIN  
INGREDIENTS**

# LITTLE JARS. BIG ON CARE.



The ICON logo is used to show that the product(s) meet the criteria for our most popular and best-selling products.

**a Tender Care  
Sweet Mandarin  
Multi-purpose Balm**  
1 0.5 m l  
**46989 GHC 133**

**b Tender Care  
Raspberry Multi-  
purpose Balm**  
10.5ml  
**36152 GHC 133**

**c Tender Care  
Blackcurrant Multi-  
purpose Balm**  
1 0.5 m l  
**36151 GHC 133**

**d Tender Care Natural  
Multi-purpose Balm**  
1 0.5 m l  
**12760 GHC 133**

## TENDER CARE

# THE THRILL OF THE CHILL

Experience the invigorating rush with North For Men Subzero, where peak performance meets the ultimate hydration experience with a icy fresh effect. Optimise your skin and hair and embrace a new routine that leaves you feeling rejuvenated.



With enhanced **Arctic Pro Defence** technology to purify, increase hydration, and shield your skin

Formulated with **D-Panthenol** for comprehensive hydration



With **72HR** deodorant protection, instant cooling effect

**a North For Men Subzero Deodorant Roll-On**  
50 ml

**46633 GHC 112**

**b North For Men Subzero 2-in-1 Shaving & Cleansing Foam**  
200 ml

**46632 GHC 322**

**c North For Men Subzero 2-in-1 Moisturising Gel**  
50 ml

**46149 GHC 126**

# A BURST OF **CONFIDENCE**

## ACTIBOOST TECHNOLOGY

ActiBoost fragrance capsules break apart when triggered by motion or release an additional burst of fresh fragrance when you need it most.



**a ActiBoost  
Power Move  
Anti-perspirant  
Deodorant Spray**  
150 ml  
**46382**  
**GHC 180**

**b ActiBoost  
Invisible Fresh  
anti-perspirant  
deodorant**  
50 ml  
**41303**  
**GHC 112**

**c ActiBoost  
Extreme Anti-  
perspirant  
Deodorant**  
50 ml  
**33142**  
**GHC 112**

**d ActiBoost  
Power Move  
Anti-perspirant  
Deodorant**  
50 ml  
**46381**  
**GHC 112**

**e ActiBoost  
Even Tone  
anti-  
perspirant  
deodorant**  
50 ml  
**43926**  
**GHC 112**

# A NEW ROUTINE FOR WHOLEMOUTH HEALTH

The key to a healthy mouth and teeth is to establish a good oral health routine. With a selection of toothbrushes, and a range of toothpastes that help protect teeth, tongue, cheeks and gums, Optifresh has a perfect routine for everyone in your family.



**a Optifresh Pro White  
Toothpaste**  
100 ml  
**38874 GHC 119**

**b Optifresh Maximum  
Fresh Toothpaste**  
100ml  
**44952 GHC 119**

**c Optifresh Natural Oils  
Toothpaste**  
100 ml  
**44953 GHC 119**

**HELPING** CAN BE EASY

TOGETHER **WE CAN DO**

MUCH **MORE!**



**SOS CHILDREN'S  
VILLAGES  
NIGERIA**

PERSONALCARE



At Oriflame, we are committed to fulfilling dreams. We are particularly sensitive to the situation of underprivileged children and we want to give them a better start in life. To accomplish that we would like to encourage you to buy our charity product to help all the children in need. Together we can do much more!

**Thank you for supporting our initiative,  
we appreciate your continued support.**



Formulated with Desensitizing agent, which helps to shield nerve endings from irritants.

**Optifresh Sensitive  
Toothpaste**  
75 ml  
**38873**  
**GHC 119**

**WHEN YOU BUY**



**WE DONATE**  
**100** NGN  
FROM EACH  
PRODUCT

# WAY TO GO FOR COOLSOFTFEET

With **chamomile** and **jojoba** to help keep feet soft, smooth and healthy.

Formulated with **Avocado Oil & Aloe Vera** known for their rich moisturising properties\*



**a Feet Up Everyday / Overnight  
Moisturising Foot Cream**

75 ml

**46373 GHC 158**

**b Feet Up Everyday / Softening  
Foot Cream**

150 ml

**46375 GHC 259**

\*Ingredientbased

With **natural eucalyptus** and **peppermint oils** to make your feet odour-free and perfectly refreshed.

With **peppermint oil** that boasts refreshing benefits thanks to its cool and **invigorating scent**. A great go-to for hot summer days.

Gently buff your feet using the **coarse side** first, followed by the **fine side**. Follow up with your favourite foot cream.

Ergonomic curved design

**Coarse and fine sandpaper**



**a Feet Up Everyday / Refreshing Foot Spray**  
250 ml

**46376 GHC 420**



**b Feet Up Everyday / Anti-Perspirant Foot Cream**  
75 ml

**46374 GHC 238**



**c Expert Foot File**  
Material: 50 % Recycled plastic,  
Sandpaper, Size: 23 x 6.5 cm  
**47427 GHC 154**

# JOIN THE HAIRCARE REVOLUTION

**Fresher, flake-free scalp!**

Hair looks  
**dandruff free\***

**Scalp feels  
purified  
and fresh**

Restores **softness & shine** for  
healthier-looking hair\*

Makes hair **3x easier to comb**Δ1

**Repairs & smooths** hair!Δ1



\*Consumer tested. Instrumental testing, versus untreated hair

**a DUOLOGI Anti-Flake  
Purifying Shampoo**  
250 ml  
**44951 GHC 382**

**b DUOLOGI Intense  
Repair Shampoo**  
250 ml  
**44950 GHC 382**

# MINI EFFORT,

# MAXIREPAIR

**Give damaged hair the comeback it deserves!** DUOLOGI Intense Repair targets dry and damaged hair, as Keratin protein and nourishing **Oat Lipids** help to strengthen hair from the root. It's damaged hair's worst enemy and your easiest win.

Strengthens hair from the root with **Keratin protein**, **protective Mango Butter** helps to drench hair in nourishment

**Strengthen hair  
& smooth splits**

Deeply nourishing for  
**smoother strands\***

Smooths, protects and  
repairs **damaged hair $\Delta$ 1**  
Instantly **shiny, softer  
hair\***



**a DUOLOGI Sealing Hair Serum**  
30 ml  
**44964 GHC 369**



**b DUOLOGI Intense Repair Hair Mask**  
200 ml  
**44963 GHC 329**



**c DUOLOGI Rich Creme Conditioner**  
150 ml  
**44960 GHC 382**

\* Consumertested  $\Delta$ 1 Instrumentaltesting,versus untreatedhair

# PAMPER YOUR SKIN WITH HYDRATION FROM NATURE



## CONDITIONER

Intensively nourishes dry and damaged hair, leaving it feeling soft and strong.



## HAIR OIL

Replenishes and moisturises the hair and helps prevent dandruff.

## HOT OIL

Nongreasy and lightweight formula moisturises and conditions dry hair.



**a Love Nature Conditioner  
For Dry Hair with Organic  
Wheat & Coconut**

250 ml

**41295 GHC 193**

**b Love Nature Nourishing  
Hair Oil Coconut Oil**

100 ml

**41568 GHC 210**

**c Love Nature Hot Oil  
For Dry Hair with  
Organic Wheat &  
Coconut**

15 ml

**41308 GHC 64**

# JUICY CAREFOR YOUR HAIR



**a** Love Nature Up-Loved Purifying Shampoo with Upcycled Apple & Organic Kale  
250 ml  
**46383**  
**GHC 193**



**b** Love Nature Strengthening Hair Smoothie Mask with Organic Banana  
30 ml  
**43661**  
**GHC 74**



**c** Love Nature Up-Loved Nourishing Leave-in Conditioner with Upcycled Banana Flower & Organic Acai  
150 ml  
**46371**  
**GHC 193**



**d** Love Nature 2-in-1 Shampoo For All Hair Types with Organic Avocado Oil & Chamomile  
500 ml  
**41362**  
**GHC 364**

# LUSCIOUS, PAMPERING SKIN TREATS



**a Milk&HoneyGold**

**MoisturisingHandCream**

75 ml

**47224 GHC 159**

**b Milk & Honey Gold Smoothing  
Sugar Scrub**

200 ml

**46969 GHC 336**

**c Milk & Honey Gold Nourishing  
Hand & Body Cream**

250 ml

**46968 GHC 313**

**ICON**  
★★★★★

The ICON logo is used to show that the product(s) meet the criteria for our most popular and best-selling products.

**NG**

Copyright ©2026 Oriflame Cosmetics AG  
Oriflame Cosmetics, Nigeria Ltd 43 Adeniyi Jones  
Avenue, Ikeja, Lagos, Nigeria  
Customer Service Email:  
CustomerserviceNg@oriflame.com

**HELLO!**

CHATWITH US  
VIA CHATBOT AT  
[WWW.ORIFLAME.COM.NG](http://WWW.ORIFLAME.COM.NG)

